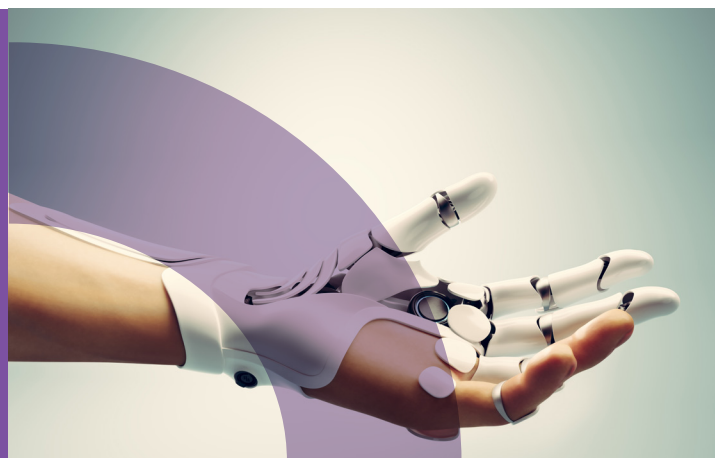


General Overview

- ✓ Typical on-programme learning: 18 months
- ✓ EPA duration: 3 months
- ✓ Maximum funding: £6,000
- ✓ Level 3



This occupation is found in the NHS or independent companies contracted to supply a service to the NHS, or companies that provide a private service direct to individuals. Some technicians work in a department based in a hospital environment or within a manufacturing unit away from a hospital base.

The purpose of the occupation is design and manufacture custom-made devices to meet the specification/prescription determined by the Prosthetist/Orthotist.

In prosthetics this is an artificial limb (prostheses), in orthotics it can be a range of devices from diabetic footwear to spinal bracing (orthoses).

In their daily work, an apprentice will interact with patients and their families, the Prosthetist/Orthotist, suppliers, and colleagues.

An employee in this occupation will be responsible for:

- Planning the design and manufacturing of custom-made devices to meet the prescription and timescale and advising if there are any issues which may cause difficulty in production of the device.
- Providing advice on technical solutions to achieve the goals for the patient to the Prosthetist/Orthotist.
- Constructing the device using appropriate materials, and where appropriate, using computer technology for the various stages of customised manufacture and fitting.
- Carrying out finishing of custom-made devices.
- Providing technical assistance with the fitting of custom-made devices.

- Communicating effectively with healthcare professionals and service users.
- Working directly with patients requiring mechanical repairs to their devices.
- Carrying out repairs and modifications to custom-made devices.

Entry Requirements

Individual employers will set selection criteria. This might include GCSEs, A levels, other relevant qualifications, relevant experience and/or an aptitude test.

On-Programme Competence Evaluation

The apprentice will complete on and off-the-job training, developing their knowledge, skills & behaviours as stipulated within the apprenticeship standard.

Gateway Requirements

The employer, supported by the training provider must confirm that the apprentice is ready for EPA, before the EPA process can begin.

The employer, supported by the training provider must sign a declaration to agree the apprentice has met the required criteria as set out in the Prosthetic and Orthotic Technician standard.

As part of the SIAS EPA service, we will check that all gateway evidence has been met before we begin the process of EPA.

End Point Assessment (EPA)

The assessment plan defines the following methods of assessment for the Prosthetic & Orthotic Technician standard.

1

Observation with Questioning

- The observation of practice will relate to the job role the apprentice is working towards - duration 90 minutes.
- Questioning will consist of a minimum of 5 questions - duration 30 minutes.
- Overall duration: 2 hours.

2

Professional discussion underpinned by a Portfolio of Evidence

- A professional discussion is a two-way discussion which involves both the independent assessor and the apprentice actively listening and participating in a formal conversation. The portfolio must have sufficient content to demonstrate the apprentices' application of the specific knowledge, skills, and behaviours of the job role.
- Questioning will consist of a minimum of 10 questions.
- Duration: 1 hour.



Assessment Marking & Grading

The SIAS End Point Assessor, will combine the results of each individual assessment method and provide an overall assessment grade of Fail, Pass, or Distinction.



Apprenticeship Certification

Results for each individual assessment method will be available within 15 working days from the assessment date.

Your apprentice will receive a Certificate of Apprenticeship on successful completion of all individual assessment methods.



Guidance & Support

SIAS provide a range of resources which offer EPA guidance and support for the apprentice, the employer, and the college/training provider.

We aim to help employers and colleges/training providers to support the on-going competence evaluation of the apprentices' knowledge, skills, and behaviour to ensure that your apprentice is confident for their EPA. All of our resources are comprehensively mapped to this apprenticeship standard.